

2239204

T 27 R 22 S 34

INSTRUMENT AND PROCEDURES

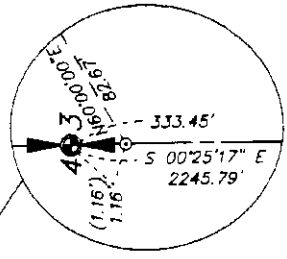
1. CA SR530 GEODETIC GPS RECEIVERS, WILD A1502 ANTENNAE AND A 1100L 3" THEODOLITE WITH E.D.M.I.

2. GPS SATELLITE OBSERVATION COMBINED WITH CONVENTIONAL TRAVERSE MEETING OR EXCEEDING STANDARDS AS SPECIFIED IN W.A.C. 332-130-090.

3. INITIAL CONTROL PERFORMED MAY, 2000 AND 2004; CORNERS SET SOME DAY IN THE NEAR FUTURE, 2006.

4. NAD 83/91 - WASHINGTON STATE GRID, NORTH ZONE, AS DERIVED BY GPS OBSERVATION.

PLAT OF CRYSTAL VIEW EST DIVISION 6



DETAIL
NOT TO SCALE

FOUND BRASS CAP PER SURVEY REC. BK. B, P. 5-11

(S 77°45'00" E) L=169.59' R=9279.99' Δ=42715°00' (L=169.59' (R=229.99') (Δ=42715°00')

(S 77°45'00" E) L=42.41' R=269.99' Δ=9°00'00" (L=42.41' (R=269.99') (Δ=9°00'00')

(S 86°45'00" E) L=245.46' R=9555.00' Δ=9°55'00" (L=245.46' (R=269.99') (Δ=9°55'00')

